

*“We can handle...”*

**AMSteel**  
Port & Steel Operations



**AMSTEEL OPERATION REPORT**

# MV CAVE Operational Report

## M/V CAVE loaded successfully

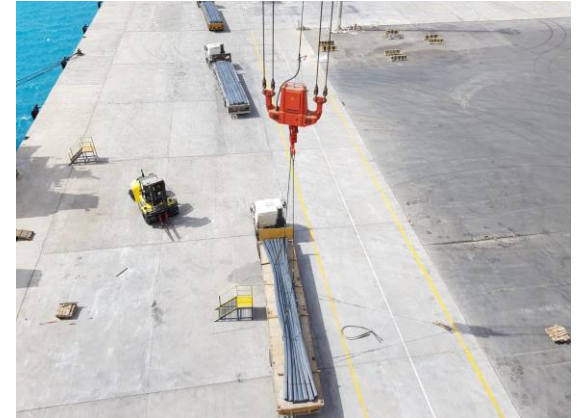
---

- **Vessel Name** : MV Cave
- **Cargo** : Steel Rebar
- **Quantity** : 2,348 Bundles / 4,768.72 Ton
- **Operation Start** : 1555 10<sup>th</sup> of July 2018
- **Operation Finish** : 1620 11<sup>th</sup> of July 2018
- **Vessel Berthing** : 0920 10<sup>th</sup> of July 2018
- **Vessel Sailing** : 0250 12<sup>th</sup> of July 2018
- **Equipment Used** : 1 LHM 550 Mobile Harbor Crane
- **Idle Duration** : Total 3 Hours
  - Midday Work Band : 3 Hours
- **Hours Operated** : 24 Hours 25 Minutes
- **Net operation** : 21 Hours 25 Minutes
- **Actual Performance** : 194 Tons Per Hour / 4,671 Tons Per Day
- **Theoretical Performance** : 221 Tons Per Hour / 5,323 Tons Per Day
- **Crane Productivity** : % 87

**AMSTEEL handled very successfully**

# MV CAVE Operational Report

## Operational Preparation



**AMSTEEL handled very successfully**

# MV CAVE Operational Report

## Vessel Berthing

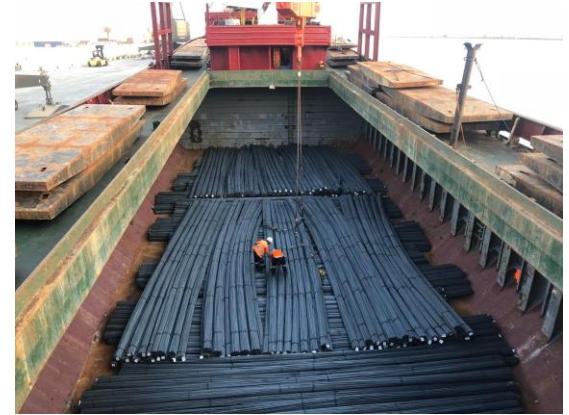
---



**AMSTEEL handled very successfully**

# MV CAVE Operational Report

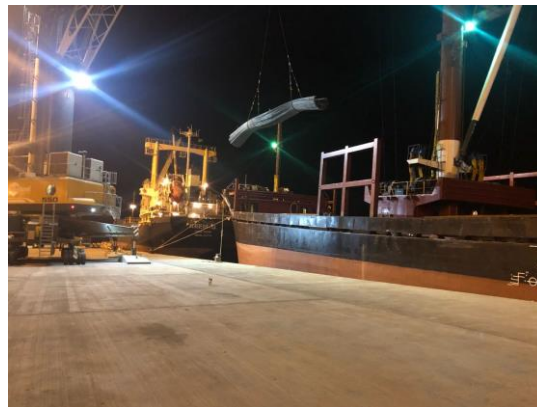
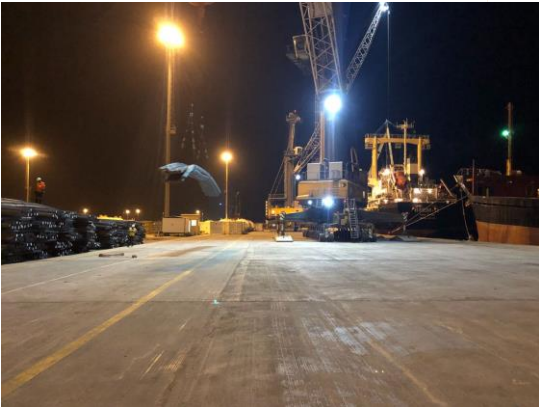
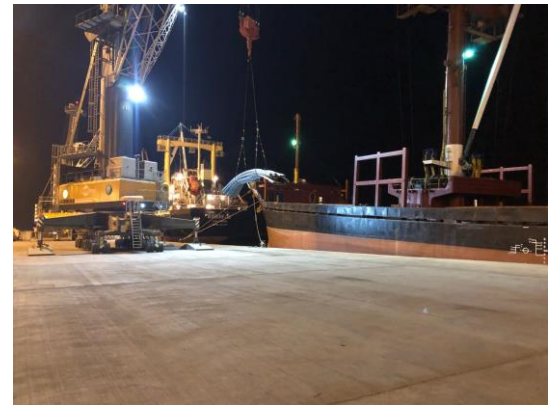
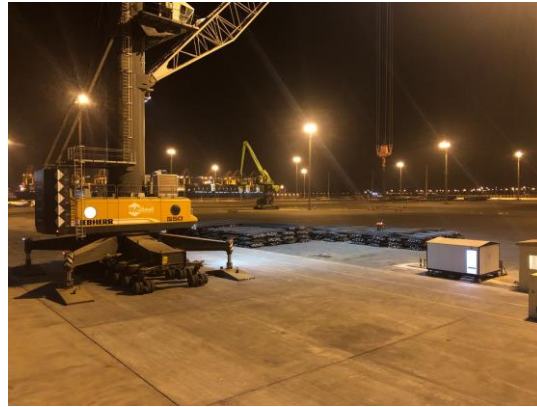
## Export Operation



**AMSTEEL handled very successfully**

# MV CAVE Operational Report

## Night Shift Operation

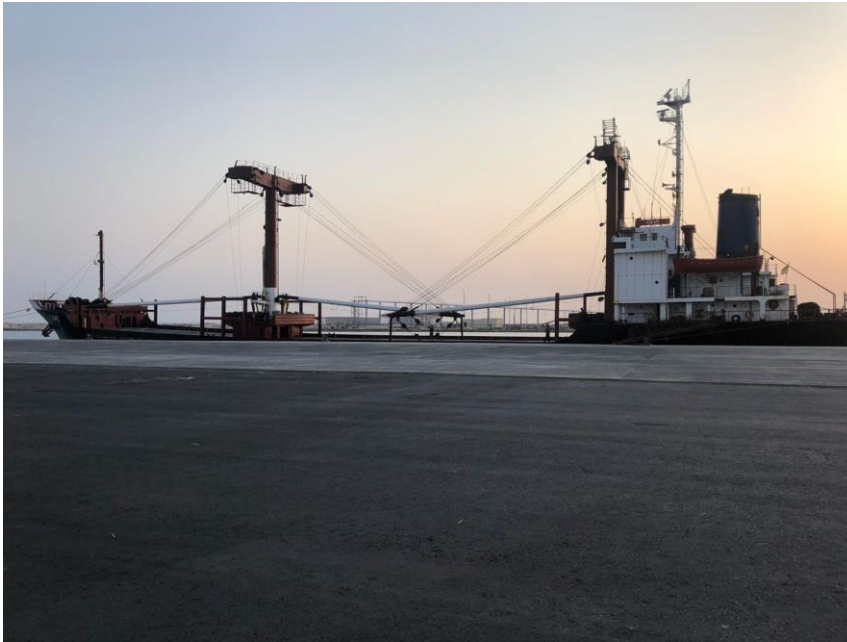


**AMSTEEL handled very successfully**

# MV CAVE Operational Report

## Operation Completed

---



**MV Cave loaded very successfully**



# Thank You

[Info@amsteel.com](mailto:Info@amsteel.com)

[Sales@amsteel.com](mailto:Sales@amsteel.com)